

|     |    |            |    |              |      |       |    |
|-----|----|------------|----|--------------|------|-------|----|
| REV | 更改 | DATE       | 日期 | MODIFICATION | 变更内容 | DRAWN | 修改 |
|     |    | 2019/04/03 |    |              |      |       | A  |

A

A

1

2

3

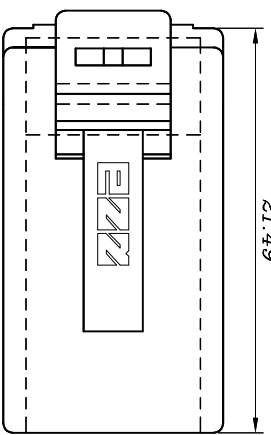
4

5

6

7

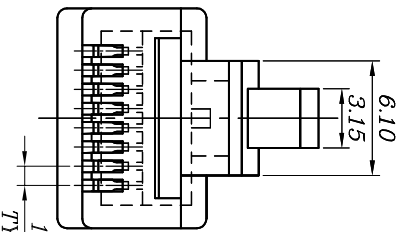
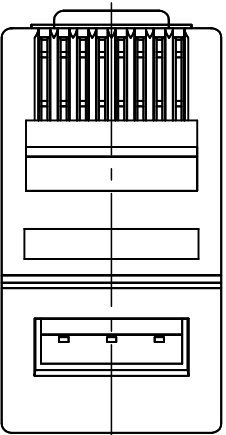
21.49



2.77

1.02

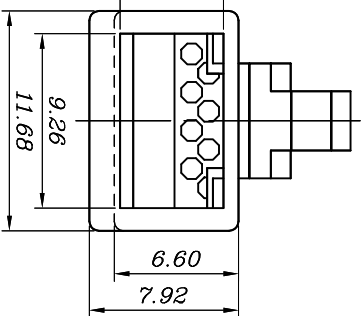
5.89

1.02  
TYP. 72.60<sup>+0.15</sup><sub>+0.05</sub>

5.50

6.60

7.92



9.26

11.68

## SPECIFICATIONS

## 1. ELECTRICAL:

UL APPLICATIONS: 250 VOLTS AC MAX. AT 2 AMPS.  
 DIELECTRIC WITHSTANDING VOLTAGE: 1000 VOLTS AC. 60 SEC.  
 INSULATION RESISTANCE: 500 MΩ.  
 CONTACT RESISTANCE: 20mΩ MAX.  
 OPERATING AMBIENT TEMPERATURE: -20°C ~ 75°C.

## 2. MECHANICAL:

STRAIN RELIEF: 20POUND MIN.  
 DURABILITY: 1200 MATING CYCLES.

## 3. MATERIAL:

HOUSING: POLYCARBONATE. UL94V-0 OR UL94V-2.  
 COLOR: TRANSPARENT OR OTHER COLOR ARE AVAILABLE.  
 CONTACT BLADE: COPPER ALLOY.  
 GOLD PLATING: 3μ"-50μ", ARE AVAILABLE.

## 4. USAGE:

SUITABLE FOR STRANDED & SOLID WIRE 23AWG ~ 26 AWG.

B

B

C

C

D

D

|              |      |     |     |      |      |      |            |       |      |
|--------------|------|-----|-----|------|------|------|------------|-------|------|
| BLADE:       | E    | EB  | Y   | YB   | Z    | A    | AE         | AB    | EC   |
| Drawing      |      |     |     |      |      |      |            |       |      |
| Mark         |      |     |     |      | ✓    |      |            |       |      |
| GOLD PLATING | 3Mu" | 3u" | 6u" | 15u" | 30u" | 50u" | CABLE TYPE | ROUND | FLAT |
| Mark         |      |     |     |      | ✓    |      | Mark       | ✓     |      |

DIMENSION IN mm (Inch)  
 TOLERANCE UNLESS  
 OTHERWISE SPECIFIED

.X±0.20

.XX±0.10

.X°±5°

.XX°±2°

审核

核

对

制

图

SCALE

5/2

SHEET

1/1

APPROVAL

核

对

CathylLi

角

注

PROJ.

更改

REV

材 质 MATERIAL PC 图 号 DWG NO. PLUG-053-EZZ-0001  
 名称 TITLE 01033 UTP6 P88R5Z50V2IT EZZ

1

2

3

4

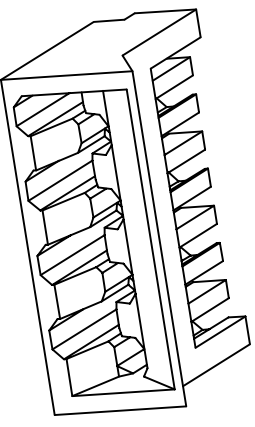
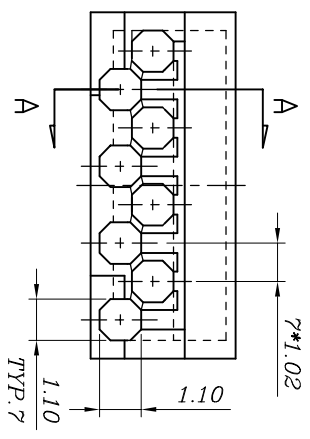
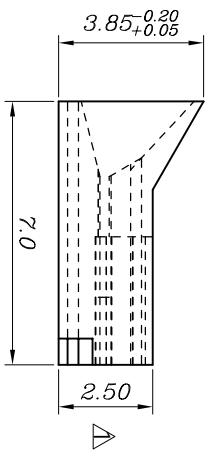
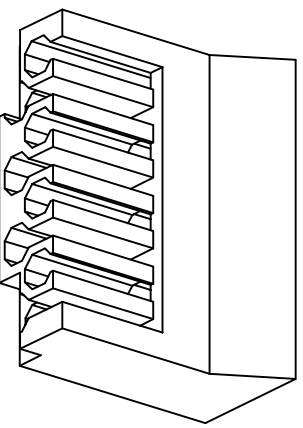
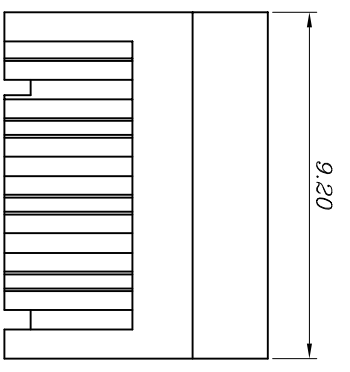
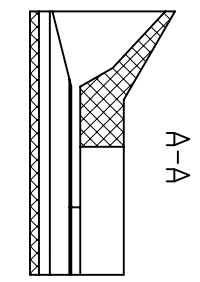
5

6

ST-DR-009A

7

|           |              |                      |             |
|-----------|--------------|----------------------|-------------|
| 更改<br>REV | 出图日期<br>DATE | 设计内容<br>MODIFICATION | 修改<br>DRAWN |
|           | 2011/10/17   |                      |             |



(It can be used for the wire OD from  $\varnothing 0.98 \sim \varnothing 1.05$ )

**EXW**

|                                      |                   |                 |                             |
|--------------------------------------|-------------------|-----------------|-----------------------------|
| DIMENSION IN mm (Inch)               |                   | 材 质<br>MATERIAL | 图 号<br>Dwg NO               |
| TOLERANCE UNLESS OTHERWISE SPECIFIED |                   | PC              | PLUG INSERT-040             |
| X $\pm 0.20$                         | X $\pm 5^\circ$   | 名称<br>TITLE     | 01033 UTP6 P88R5Z50V2IT EZZ |
| .XX $\pm 0.10$                       | .XX $\pm 2^\circ$ | 制图<br>DRAWN     | CathyLi                     |

|    |    |             |             |
|----|----|-------------|-------------|
| 审核 | 核对 | 比例<br>SCALE | 张数<br>SHEET |
|    |    | 5/1         | 1/1         |
|    |    | 角法<br>PROJ  | 更改<br>REV   |
|    |    |             | H           |

ST-DR-009A