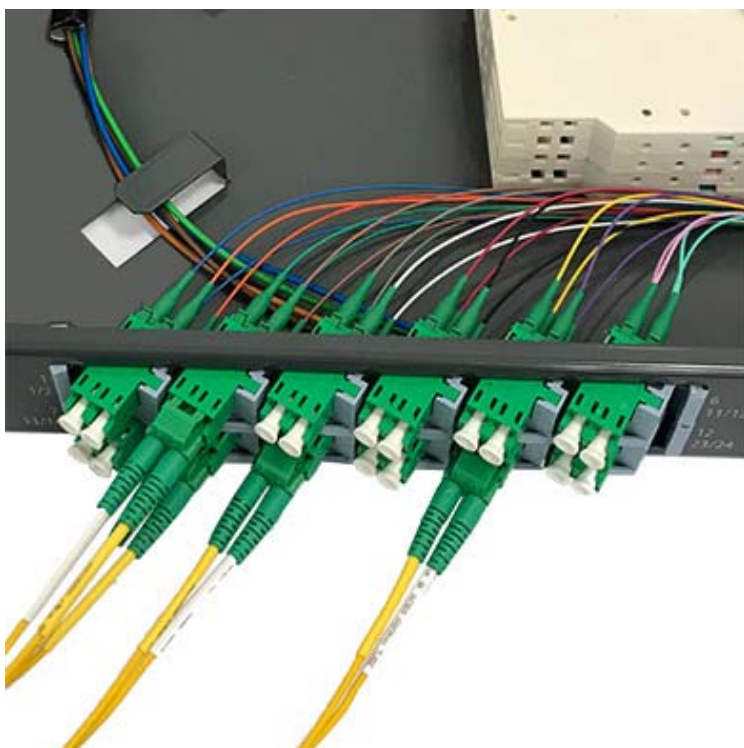


015M Kotni delilnik / 30° Angled Patch Panel



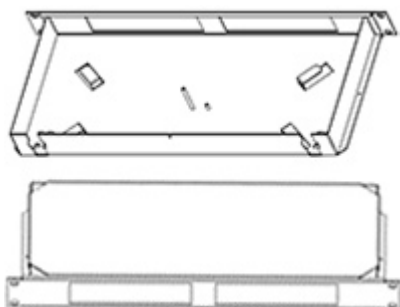
Predstavitev

Delilnik ima vgrajena kotna držala za spojnike tako, da je os spojnika 30° glede na čelno ploščo. Kotna držala pa je možno montirati ali, da so spojniki obrnjeni v levo, v desno ali v različne smeri. Držala omogočajo brez-vijačno montažo SC, LC Duplex, E2000 in FC (kvadratna prirobnica) spojnikov. Je edini 1U delilnik, ki sprejme 4 kasete s pokrovom in ima globino le 200 mm. Dodatno kotna izvedba varuje pred neposrednim stikom z laserskim žarkom.

Introduction

Patch panel 015M has built in angled holders for adapters to form 30° angle respect to the front plate! Holders can be positioned facing left, right or in different directions! Angled holders enable screwless mounting of SC Simplex, LC Duplex, E2000 Simplex and FC (square flange) adapters. Is the only 1U patch panel that accepts 4 cassettes with cover and has a depth of only 200 mm. In addition angularly positioned adapter protects eyes from undesired contact with laser beam!

Technical data



Number of cassettes	Up to 4 plus cover
Max capacity	48 splices
Material	Powder coated steel
Color	Traffic grey (RAL 7043)
Operating and storage temp.	-20°C to +80°C
Panel dimension	483 x 193 (203 w/ holders) x 44 mm
Panel weight	1.87 kg
Packing dimension	505 x 210 x 50 mm
Packing weight	2 kg

Scope of supply

Kit includes housing with 2 holes for PG16 cable glands, 4 integrated fiber organizers and points for cable fastening with ties, housing cover, 4 angled holders for adapters, cassettes holder with nut, cable ties, packed in carton.

Ordering information

EZZ P/N	Description
015M	19" kotni delilnik za 24 LCD/SC/FC spojnikov / 19" angled patch panel for 24 LCD/SC/FC couplings