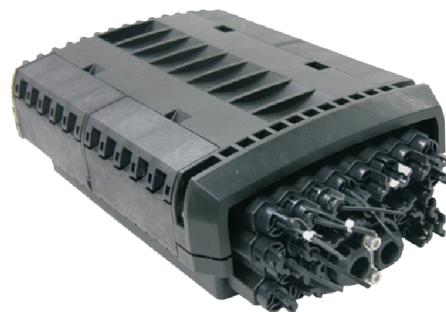


Fiber Access Terminal Closure

Description

015YL fiber access terminal closure is able to hold up to 24 subscribers and 96 splicing points as closure. It is used as a splicing closure and a termination point for the feeder cable to connect with drop cable in FTTx network system. It integrates fiber splicing, splitting, distribution, storage and cable connection in one solid protection box.



Features

- Water-proof design with IP-68 Protection level.
- Integrated with flap-up splice cassette and adaptor holder.
- Impact test: IK10, Pull Force: 100N, Full rugged design
- All stainless metal plate and anti-rusting bolts, nuts.
- Fiber bend radius control more than 40mm.
- Suitable for the fusion splice or mechanical splice.
- 2 pcs of 1*8 Splitter can be installed as an option.
- Mechanical sealing structure and mid-span cable entry.
- 24 ports cable entrance for drop cable.
- 24 adaptors for drop cable patching



Configuration

Material	Size	Max Capacity		Nos of Adaptor	Weight	Color
Strengthen Polymer Plastic	A*B*C(mm) 385*245*130	Splice 96 Fibers (4trays, 24 fiber/tray)	PLC Splitter 2pcs of 1x8	24pcs of SC	4. 5kg	Black

Applications

- Wall mounting and pole mounting installation
- FTTH pre-installation and field installation
- 4-7mm cable ports suitable for 2x3mm indoor FTTH drop cable and outdoor figure 8 FTTH self-supporting drop cable

Standard Accessories

Splice cassette and cable management tool, installation nuts and bolts, protection sleeves, hose clamp, cable tube, wrench, cover holder, rubber seal for cable entrance.

Optional Accessories

Pole ring