



Fiber Optical Media Converter

Gigabit Ethernet 1 x 10/100/1000Base-T

1 x 1000Base-Fx Mono mode Dual Fiber



System Design

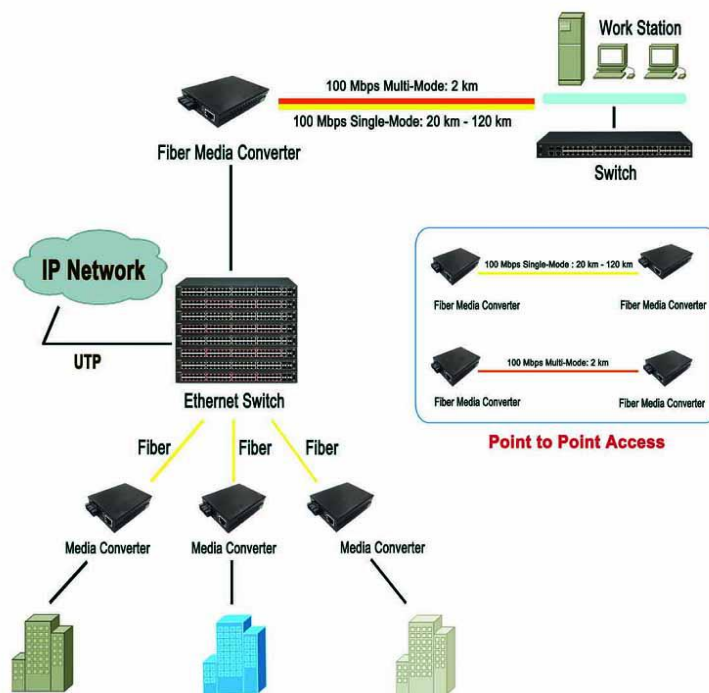
The HD- 220S-20 10/100/1000M Ethernet media converters adopts switching technology to fulfill media conversion. It complies with IEEE802.3z and IEEE802.3ab standards, and supports two types of media network connections: 10/100/1000Base-T and 1000Base-LX/LH. It inter-converts electrical signals of 10/100/1000Base-T twisted pairs with optical signals of 1000Base-LX/LH. It extends the network transmission distance to 20Km via mono-mode fiber cable .

Features

- Supporting inter-conversion between 10/100/1000Base-TX and 1000Base-LX/LH
- Supporting full-duplex and half-duplex and its auto-sensed
- Supporting automatic cross connection of twisted pair interfaces, facilitating system commissioning and installation
- Supporting the transmission of extra-long VLAN packets

- Supporting Quality of Service (QoS) and ensuring the transmission of VoIP packets;
- Supporting LFP (Select by DIP Switch freely)
- Supporting the transmission of extra-long packets up to 1600 bytes in the "store-and-forward" mode and up to 9000 bytes jumbo frames in the "Cut-through" mode (Select by DIP Switch freely)

Application



Technical Indexes

Parameter	Specifications
Access mode	10/100/1000Mbps Gigabit Ethernet
Standard	IEEE802.3ab 1000Base-T , IEEE802.3z 1000Base-SX/LX Gigabit thernet,IEEE802.1qVLAN,IEEE802.1p QoS,IEEE802.1d Spanning Tree
Wavelength	1310nm/ FP
Optical Power	-9dBm to -3dBm
Transmission distance	1310nm@20Km CAT5/CAT5E twisted pair: 100m
Port	One RJ45 connector: connected to STP/UTP CAT5/CAT5E twisted pair One optical port: SM: SC/FC (fiber size: 9/125μm)
MAC Address table	2K
Buffer space	1M
Conversion means	Media conversion
Delay	Store-and-forward: <10μs; cut-through: 1μs
BER	<10 ⁻⁹
MTBF	100,000 hours
LED	PWR (power supply), FX LINK (optical link action), TP LINK1000 (twisted pair link1000M), TP LINK100 (twisted pair link 100M), TP ACT (twisted pair packet forwarding)
Power	DC5V 2A (external), AC220 0.5A/DC-48 (built-in)
Power consumption	Full load <3W
Operating temperature	-10~55°C
Operating humidity	5%~90%
Maintaining temperature	-40~70°C
Maintaining humidity	5% ~ 90% non-condensing
Dimensions	26mm (H) * 70mm (W) * 94 mm (D) (external power supply)
	30mm (H) * 110mm (W) * 140 mm (D) (internal power supply)



Ordering information

Model Number	Access Mode	Fiber Interface	Fiber Mode	Wavelengths	Maximum Transmission Distance
HD-220S-20	10/100/1000Mbps	SC/ST/FC	Mono-mode Dual fiber	Tx1310nm/ Rx1310nm	20Km