

## Fiber Blowing Machine

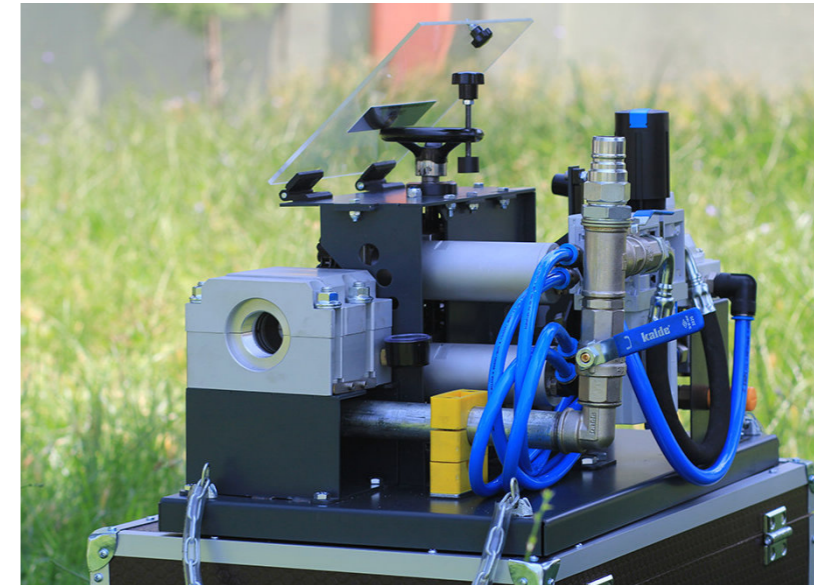
# SKYJET

6 mm - 24 mm



SkyJET is a machine used to blow fiber optic cables into HDPE pipes. It contains two pneumatic air motors. These engines work with high pressure air. Therefore, you only need to use an air compressor to blow the fiber optic cables into HDPE pipe.

## SkyJET | Cable Blowing Machine



### General Details

Recommended minimum air pressure for SkyJET :  
12 bar / 10m<sup>3</sup> / min. (40mm HDPE Pipe)

Fiber Optic Cable Diameter Range :  
6mm-24mm

Best Performance :  
8mm-18mm

HDPE Pipe Diameter Ranges:  
Can be adjusted optionally

SkyJET is a machine used to blow fiber optic cables into HDPE pipes. It contains two pneumatic air motors. These engines work with high pressure air.

Therefore, you only need to use an air compressor to blow the fiber optic cables into HDPE pipe.

### 40 mm Pipe Diameter for SkyJET

Standard SkyJET machine is produced for 40 mm pipe diameter. Regulating parts are produced for pipe diameters less than or greater than 40 mm.

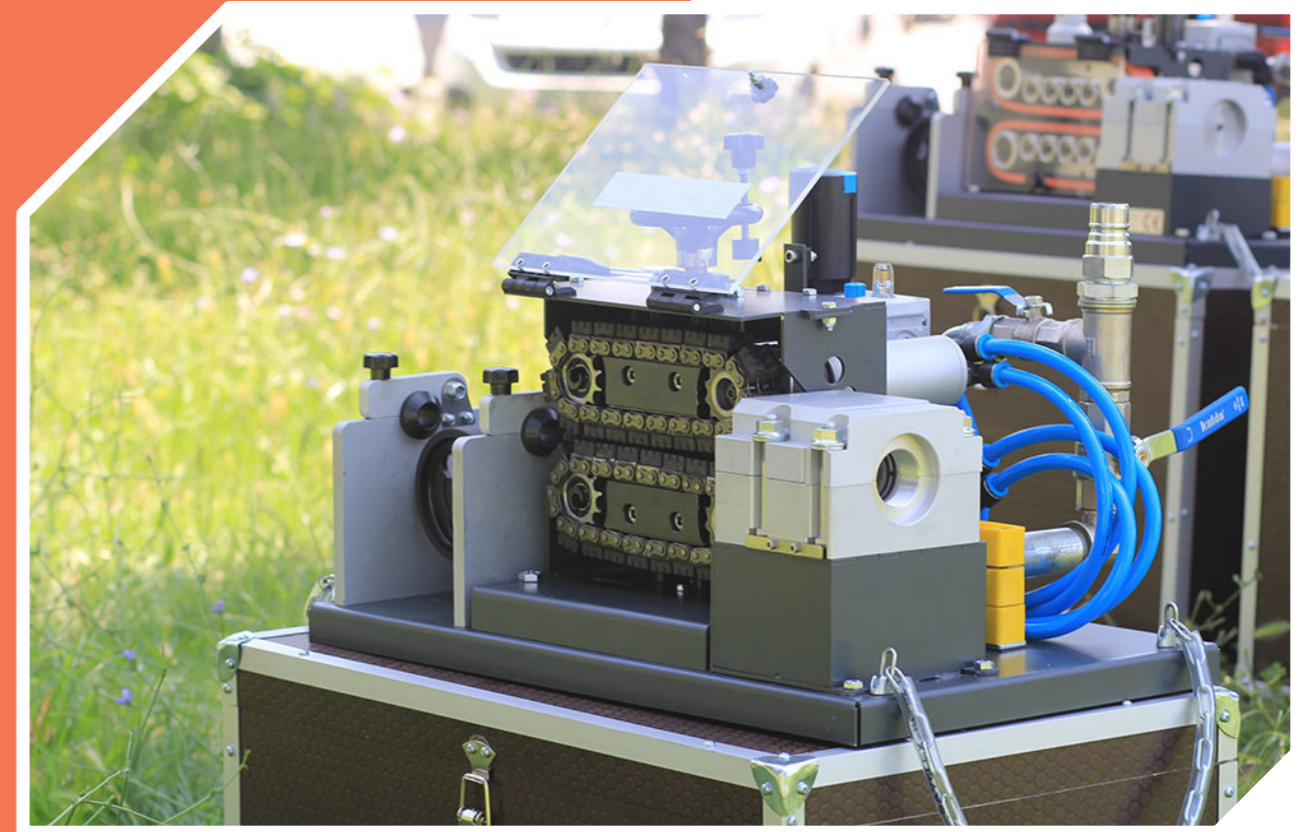
In cases where the pipe diameter is more than 40 mm, pipe fittings are given to the outlet box according to the desired line link diameter. You must inform us of your pipe diameter with your order.

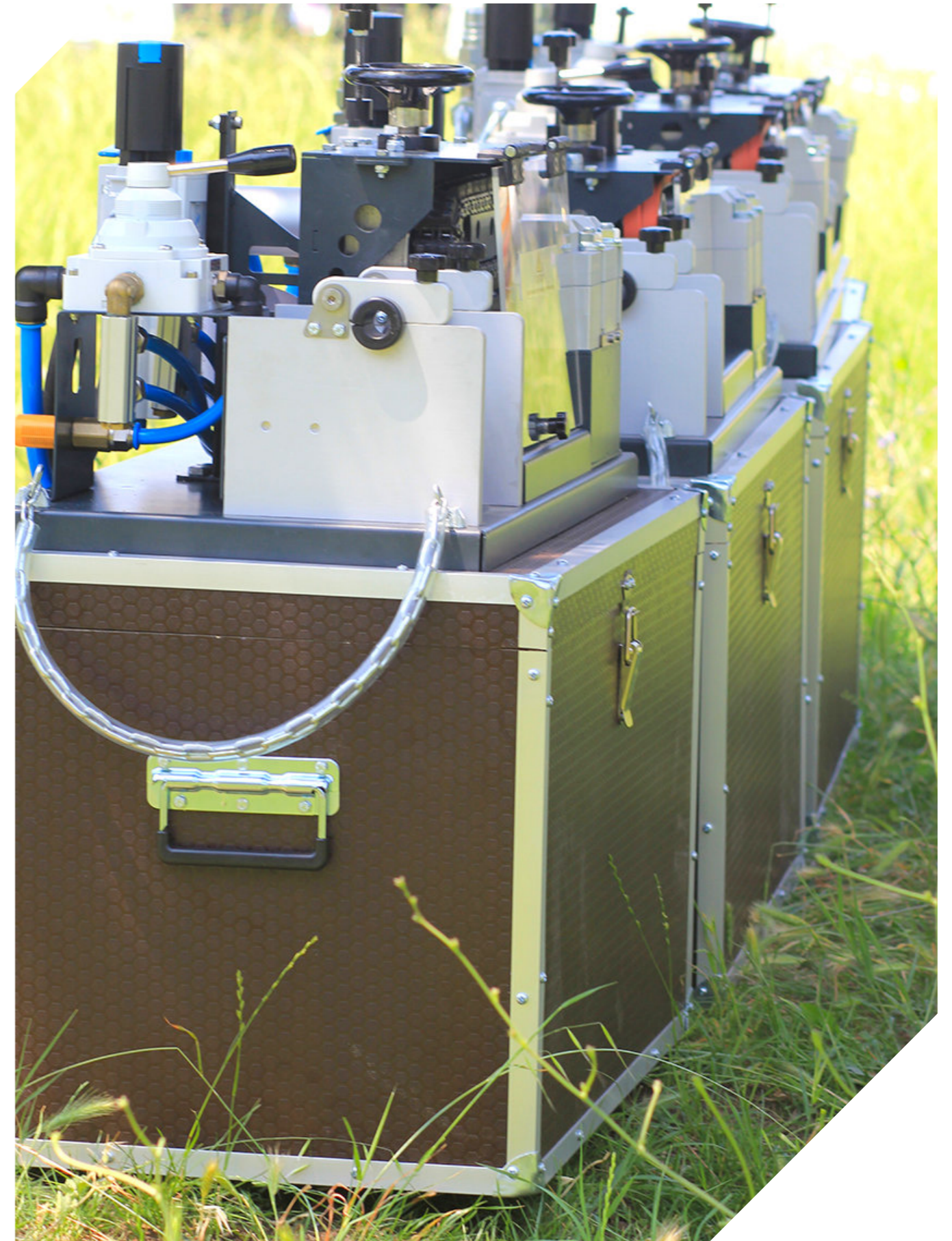
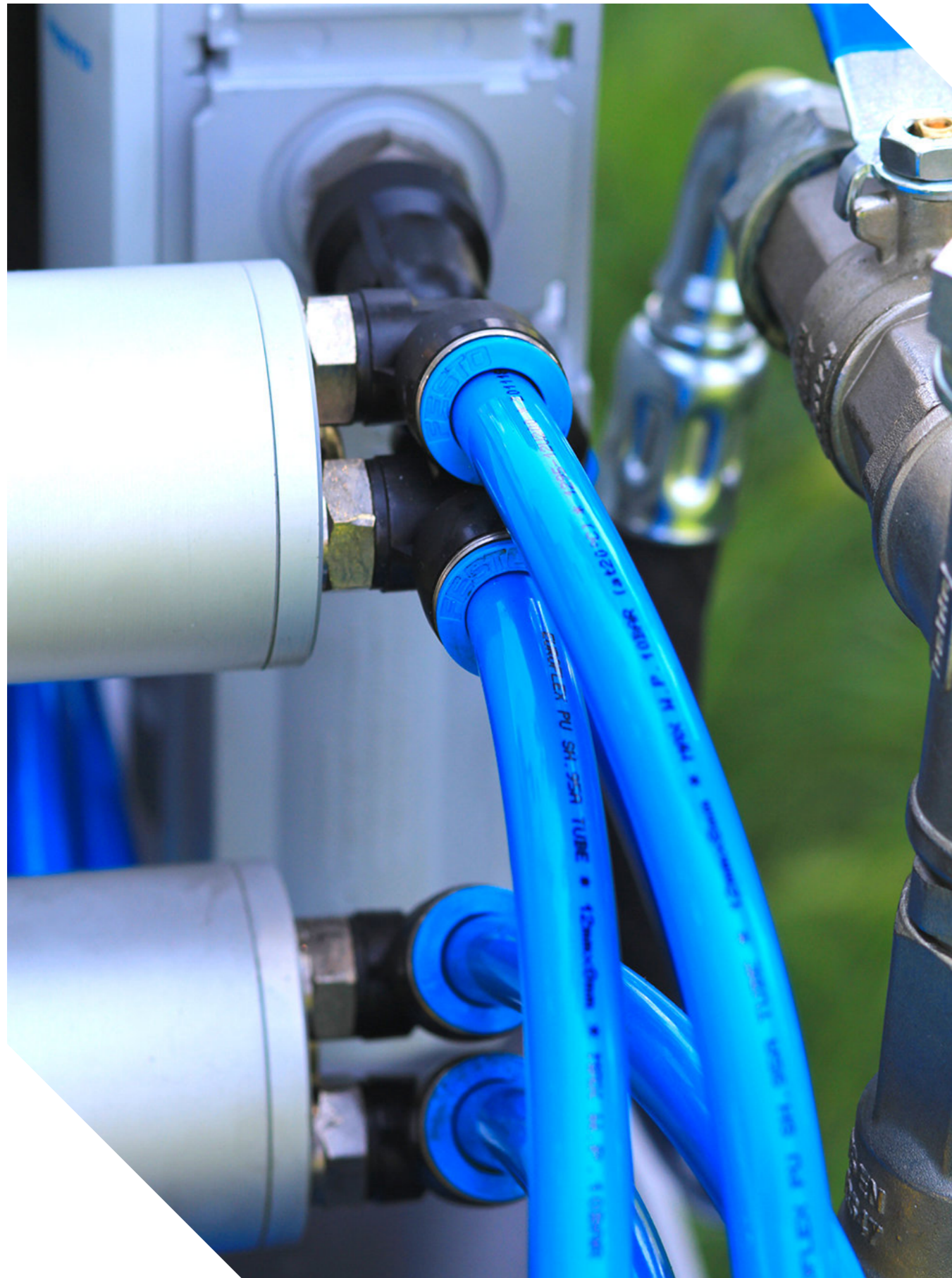
### Easy Installation and Operation

All parts and equipment required for the fiber optic cable installation process are provided with the machine. SkyJET takes its power from the air compressor and transmits it to the air motors. In this way, you do not need any additional power supply. You just need to assemble the compressor adapter on the machine. These adapters come with the machine as a kit. In addition, compressor connection apparatus are provided free of charge with the machine.

*SkyJET machine contains two pneumatic air motors*







### Standard Cable and Pipe Sizes

Standard cable and pipe sizes used in SkyJET Cable blowing machine

**Standard Hdpe pipe sizes:** 12mm-14mm-16mm-20mm-25mm-32mm-40mm-50mm-63mm

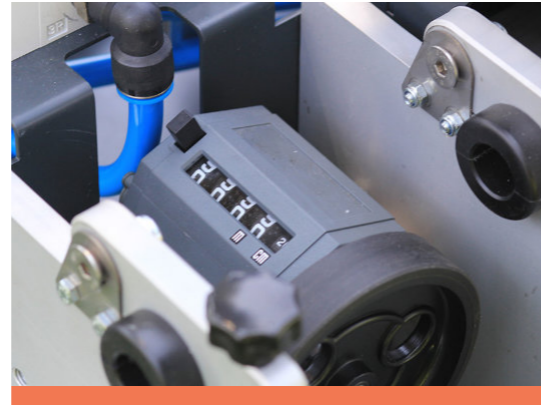
(With each cable diameter, cable pads and nutrings are also given.)

**There are 4 sets of chains for Cable Diameters.**

6mm-8mm Chain Set

9mm-13mm Chain Set

14mm-18mm Chain Set and 19mm-24mm Chain Set



### Hdpe Pipe Dimensions

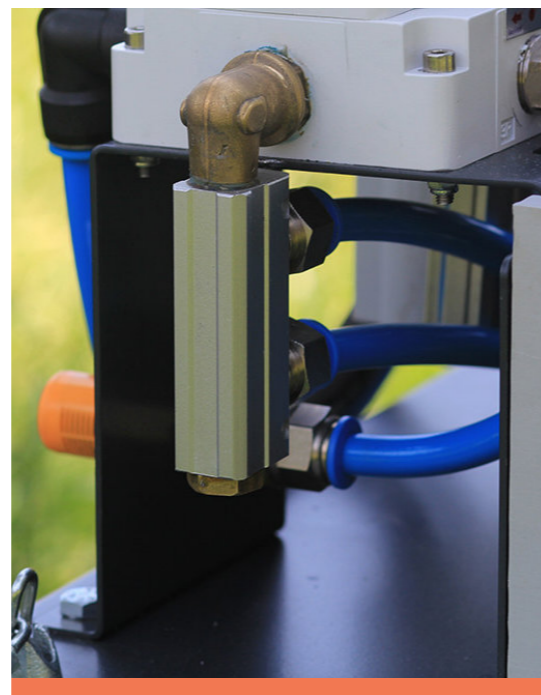
**Hdpe pipe sizes:** 20mm-25mm-32mm-40mm-50mm-63mm

If you have a pipe diameter between these dimensions, please notify our sales representative.

Please contact us for further information or placing order.

### SkyJET General Features

- Mechanical yardage meter that is resistant to rough weather conditions.
- Cable pusher Two simultaneous pneumatic air motors.
- Bi-directional (Forward-Backward) directed propulsion.
- Compressor air connection coupling.
- Fiber optic cable pads for different diameters (from 6mm to 24mm)
- HDPE pipe connectors for different diameters (from 14mm to 63mm)
- Special chain sets: 6mm-8mm / 9mm -13mm /14mm-18mm / 19mm- 24mm
- Separate sets of parts for each cable diameter.
- Semi-automatic axer working in different diameters.
- First-class materials and workmanship
- 2 year full warranty.
- 10 year spare parts guarantee.



### SkyJET Technical Specifications

<b>Pushing Force:</b>	0 – 300 N
<b>Pushing Speed:</b>	0 – 150 m/dak
<b>Cable Size :</b>	6 – 24 mm
<b>Best Performance :</b>	8 – 18 mm
<b>HDPE Pipe Diameter :</b>	14 – 63 mm
<b>Drive Motor :</b>	Air (Double Effective Air Motors)
<b>Air consumption to minimum recommended pipe diameter (at 12Bar):</b>	
<b>0 – 25mm :</b>	4m <sup>3</sup> /min 150 CFM
<b>26mm – 30mm :</b>	5m <sup>3</sup> /min 185 CFM
<b>31mm – 35mm :</b>	7m <sup>3</sup> /min 250 CFM
<b>36mm – 40mm :</b>	10m <sup>3</sup> /min 375 CFM
<b>41mm – 44mm &gt; :</b>	12m <sup>3</sup> /min 450 CFM



### SkyJET Fiber Optic Cable Diameter Ranges

