

# Managed Industrial POE Switch

4-port 10/100/1000Mbps RJ45 + 2-port 1000Mbps SFP Slot



## Overview

NF524GMP-SFP series is the 10/100/1000 Mbps managed industrial POE fiber switch, comply with IEEE802.3af/at, power on POE IP cameras through the Ethernet cable, simple construction, power range up to 100 meters, operating temperature-40 °C to + 85 °C, meet IP44 protection degree and EMC industrial grade requirements, DIN rail installation, pass through dangerous environmental certification and comply with FCC and CE standards. The reliable industrial grade design could ensure continuous and stable operation of the automation system.

## Features

1. Support power on POE IP cameras through the wireless access point (AP) of 5 categories of Ethernet cable.
2. IEEE 802.3af/at power on to 1 ~ 4 RJ45 ports
3. 4 x 10/100/1000Mbps Auto-sensing RJ45 ports
4. 2 x 1000Mbps SFP fiber ports
5. 4 KV Ethernet surge protection, adapt to a harsh outdoor environment
6. Support Auto MDI/MDIX
7. Flow control mode: full duplex with IEEE 802.3x standard, half-duplex with
8. Back pressure standard



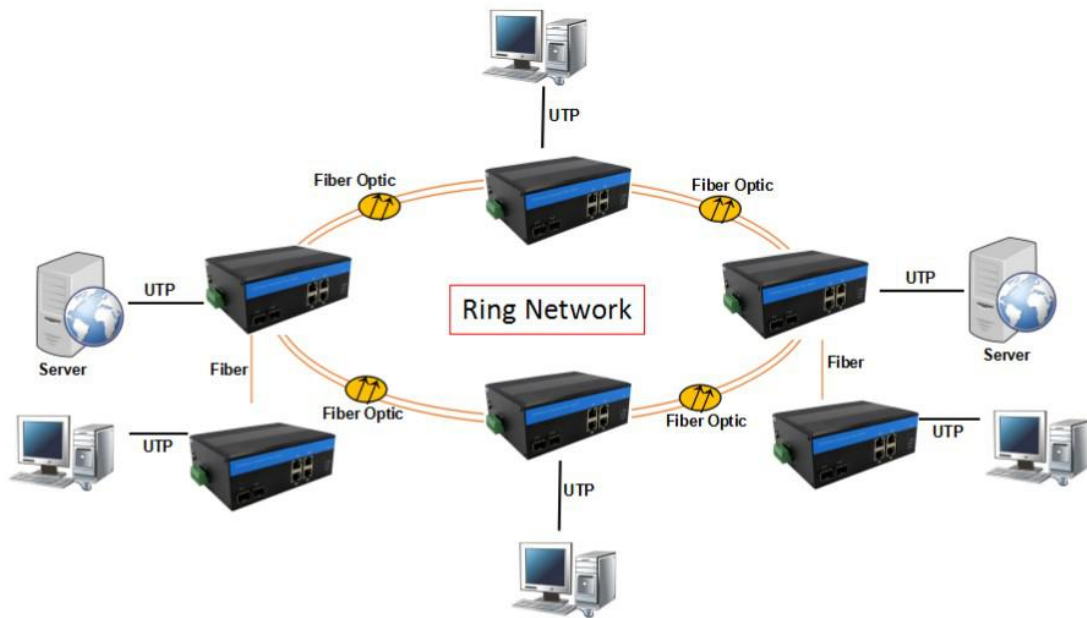
9. IEEE 802.3 10Base-T and IEEE 802.3u 1000Base-TX compliant
10. Max power to 15.4W under 802.3af standard, 30W under 802.3at standard to each PoE port
11. Detect the PoE models of electrical equipments.
12. A store-and-forward switching mechanism
13. Operating environment temperature: -40 ° ~ 85 ° c
14. Intelligent power consumption detection and classification
15. Ring ring network patent technology (Fault recovery time < 20ms)
16. IGMP Snooping, GMRP and static IGMP
17. VLAN, PVLAN, control broadcast domain
18. IEEE802.1p\_QOS
19. Port trunking, rate control, broadcast storm control
20. SNMP, Telnet, WEB
21. SSH, SSL, ACL, automatic MAC address bounding
22. Support port mirroring
23. Alarming: support ARP listening, power down, and ring-alarm
24. Support link monitoring

### Technical Specification

Product Name	10/100/1000Mbps managed Industrial POE Fiber Switch (2F+4TP)
Model No.	NF524GMP-SFP
Port	2 x 1000Mbps SFP port SM: 1310nm/1550nm, 20Km 1490nm/1550nm, 40~120Km MM: 1310nm, 2Km 4x10/100/1000M UTP RJ45 (Support MDI/MDIX auto-sensing)
Switching features	Transmission mode: storage and forward System bandwidth: 12Gbps (non-traffic jam)
Network media	10BASE-T: CAT3, CAT4, CAT5 un-shielded twisted pair(≤100m) 100/1000BASE-TX: CAT5 or above shielded twisted pair(≤100m) SFP port, transmission distance: 20Km, 40Km, 60Km, 80Km, 100Km
LEDs	Power, network, fiber
Power supply	Input voltage: DC 48-53V No-load power consumption: 5W Reverse polarity protection: support POE power supply input voltage: 48V (max 53V), Single PoE power supply output power: 15.4W (port 1~4) (802.3at standards required special instructions)
Environment	Working temperature: -40° ~ 85°C Storage temperature: -40° ~ 85°C Working humidity: 10% ~ 90%, non-condensing

	Storage humidity: 10%~95%, non-condensing
Industry Standards	EMI: FCC Part 15 Subpart B Class A, EN 55022 Class A EMS: EN 61000-4-2 (ESD) Level 3, EN 61000-4-3 (RS) Level 3, EN 61000-4-4 (EFT) Level 3, EN 61000-4-5 (Surge) Level 3, EN 61000-4-6 (CS) Level 3, EN 61000-4-8 Traffic Control: NEMA-TS2 Vibration: IEC 60068-2-6 Freefall: IEC 60068-2-32 Shock: IEC 60068-2-27 Rail Traffic: EN 50121-4
Safety	CE Mark ,commercial CE/LVD EN60950
Mechanical information	Shell: Corrugated metal shell Safety class: IP44 Dimension: 158 x 114.8 x 60mm Mounting method: Din-rail mounting
Warranty	Replacement within 1 year; 5 years repairing

### Typical Application





## Ordering information

Model	Description
NF512GMP-SFP	Managed Industrial 10/100/1000M POE Switch 1 SFP port + 2 RJ45 port, DIN Rail type, DC48~53V, exclude power adapter and SFP module
NF514GMP-SFP	Managed Industrial 10/100/1000M POE Switch 1 SFP port + 4 RJ45 port, DIN Rail type, DC48~53V, exclude power adapter and SFP module
NF516GMP-SFP	Managed Industrial 10/100/1000M POE Switch 1 SFP port + 6 RJ45 port, DIN Rail type, DC48~53V, exclude power adapter and SFP module
NF518GMP-SFP	Managed Industrial 10/100/1000M POE Switch 1 SFP port + 8 RJ45 port, DIN Rail type, DC48~53V, exclude power adapter and SFP module
NF522GMP-SFP	Managed Industrial 10/100/1000M POE Switch 2 SFP port + 2 RJ45 port, DIN Rail type, DC48~53V, exclude power adapter and SFP module
NF524GMP-SFP	Managed Industrial 10/100/1000M POE Switch 2 SFP port + 4 RJ45 port, DIN Rail type, DC48~53V, exclude power adapter and SFP module
NF526GMP-SFP	Managed Industrial 10/100/1000M POE Switch 2 SFP port + 6 RJ45 port, DIN Rail type, DC48~53V, exclude power adapter and SFP module
NF528GMP-SFP	Managed Industrial 10/100/1000M POE Switch 2 SFP port + 8 RJ45 port, DIN Rail type, DC48~53V, exclude power adapter and SFP module
NF544GMP-SFP	Managed Industrial 10/100/1000M POE Switch 4 SFP port + 4 RJ45 port, DIN Rail type, DC48~53V, exclude power adapter and SFP module
NF548GMP-SFP	Managed Industrial 10/100/1000M POE Switch 4 SFP port + 8 RJ45 port, DIN Rail type, DC48~53V, exclude power adapter and SFP module
NF504GMP	Managed Industrial 10/100/1000M POE Switch 4 RJ45 port, DIN Rail type, DC48~53V, exclude power adapter
NF508GMP	Managed Industrial 10/100/1000M POE Switch 8 RJ45 port, DIN Rail type, DC48~53V, exclude power adapter