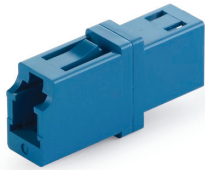


999 Series

LC ADAPTER STANDARD



LC Adapter Simplex



LC Adapter Simplex



LC Adapter Duplex

CODE	TYPE	COLOR	SLEEVE TYPE
999	1 Simplex	1 Blue	1 Zirconia Straight Split
	2 Duplex	2 Black	2 Metal Straight Split
		3 APC Green	
		8 Beige	
		9 Aqua	

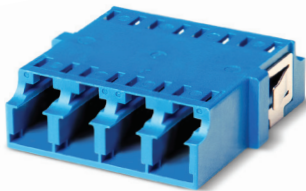
999 - 191 ORDER CODE example

Features:

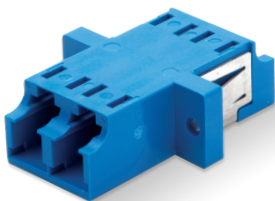
- Compact design
- RJ-45 Style Interface
- Simplex and duplex type available
- Telcordia, ANSI, TIA/EIA, and IEC compliance\*
- Color coding
- High precision alignment with zirconia sleeve or metal sleeve

988 Series (SC Footprint SNR-SNR)

LC ADAPTER (SC FOOTPRINT STYLE) SYMMETRICAL DESIGN



LC Quad Adapter, with SC Footprint, without Flange, Senior-Senior



LC Duplex Adapter, with SC Footprint, with Flange, Senior-Senior

CODE	TYPE	COLOR	SLEEVE TYPE	SHUTTER
988	3S Duplex with Flange	1 Blue	1 Zirconia Straight Split	N No Shutter
	4S Duplex with No Flange	2 Black	2 Metal Straight Split	
	5S Quad with Flange	3 APC Green		
	6S Quad with No Flange	8 Beige		
		9 Aqua		

988 - 3S11 - N ORDER CODE example

Features:

- SC Foot print design allows to use the LC Adapter in a SC panel and double the density
- Premium One piece housing design / no welding point
- Telcordia, ANSI, TIA/EIA and IEC Compliance
- Internal shutter available
- SC Foot print type, Senior - Junior type also available
- High precision alignment with zirconia sleeve or metal sleeve



LC One Piece Adapter, No Weld Type



LC Two Piece Adapter, Welded Type

The new one piece housing design prevents breaking of the adapter due to the absence of ultrasonic weld type construction.

## LC ADAPTER WITH SHUTTER

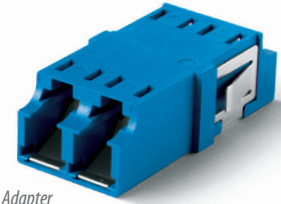
SENKO offers internal shutters for adapters to shield potentially harmful light. SENKO's patented internal shutter is a retractable shutter inside the adapter body and is only actuated by inserting the connector in to the

body, designed specifically to prevent end face damage of the ferrule. The internal shutter is fully automatic and provides an alternative to external shutter solutions.

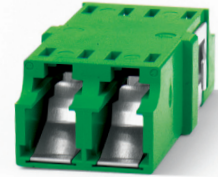
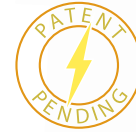
CODE	TYPE	COLOR	SLEEVE TYPE	SHUTTER
988	3S Duplex with Flange	1 Blue	1 Zirconia Straight Split	A Internal Shutter (w/o mark)
	4S Duplex with No Flange	2 Black	2 Metal Straight Split	
		3 APC Green		
		8 Beige		
		9 Aqua		

988 - 3S11 - A ORDER CODE example

### 988 Series



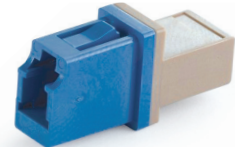
LC One Piece Adapter with SC Foot Print



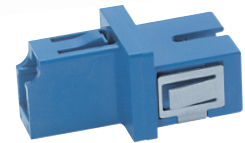
LC One Piece Adapter with SC Foot Print (SNR/SNR)

## LC-MU & LC-SC HYBRID ADAPTER

PART NUMBER	DESCRIPTION
M90-101	LC-MU Simplex Hybrid adapter with Zirconia Sleeve
990-113	LC-SC Simplex Hybrid adapter with Zirconia Sleeve



LC-MU Hybrid Adapter



LC-SC Hybrid Adapter

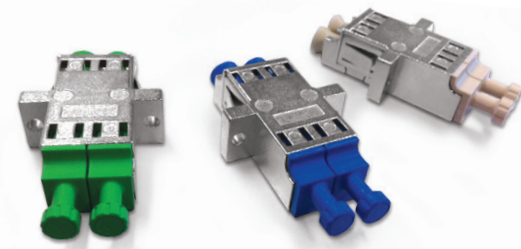
## LC METAL ADAPTER

LC one piece duplex metal adapters are available in symmetrical SC foot print design with or without flanges. They can be ordered with internal shutters to provide much needed eye safety by shielding the potentially harmful laser light. These adapters have color coded

dust cap and sleeve holder to ensure right adapter is used for the correct application (PC SM: Blue, PC MM: Beige, APC: Green). Both zirconia and phosphor bronze alignment sleeves are available on this product.

CODE	TYPE	DUST CAP/INTERNAL COLOR	SLEEVE TYPE	SHUTTER
988M	3S Duplex with Flange	1 Blue	1 Zirconia	N No Sutter
	4S Duplex without Flange	2 Green	2 Metal	A Internal Shutter
		3 Beige		

988M - 3S1 - 1N ORDER CODE example



LC One Piece Duplex Adapters