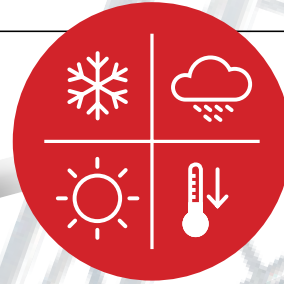


IP-SERIES

WITHSTAND THE ELEMENTS

Introducing the SENKO IP-SERIES, an effective and low cost connector for harsh environmental applications



IP-LC



IP-MPO



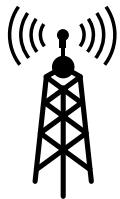
IP-LCXP

FIELD INSTALLABLE



IP-SC

FIELD INSTALLABLE



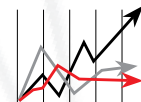
New line of IP 68 Connectors exceed ODVA requirements

The SENKO IP-LC Connector is designed to exceed the requirements of ODVA, the connectors meet IP 68 environmental sealing ratings and are the ideal choice for a low cost/easy to use solution in Industrial, Fiber to the Antenna (FTTa), or any other harsh environmental applications.



Simple bayonet locking system

The IP-LC Connector is designed according to the IEC 61076-3-106 interface standard, which allows mating to other similar mechanical locking systems.



Low Insertion Loss

Incorporating the SENKO LC connector yields exceptionally low insertion loss for Singlemode applications and provides connector color coding options in Multimode applications for differentiation of OM3 or OM4 constructions.

FEATURES

- Cost effective solution for in house termination
- IP68 Water immersion and Dust protection for hash environment
- Wide range of operational temperature for outside plant -40°C/+70 per
- Wide range of cables to be used, 5-8mm OD cable with two 2.0mm to 3.0mm jacketed subunits
- Chemical Resistance
- Intermatable to other Industrial LC adaptor per IEC 61076-3-106
- Simple assembly requiring no special tools
- Durable mechanical mating, minimum of 500 matings

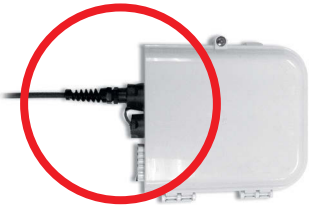
OPTICAL CHARACTERISTICS	SINGLEMODE	MULTIMODE
For IP-LC Connector	Typical	Typical
Insertion Loss	0.10dB	0.20dB
Return Loss	≥ 55dB typical for (PC)	
Durability	< 0.2dB typical change 500 matings	
Operating Temperature	-40°C to +70°C	
Ferrule Hole Size	125.5µm +1/-0 Concentricity: ≤ 1µm	127µm
IP Rating	IP 68	

IP-LC Connector

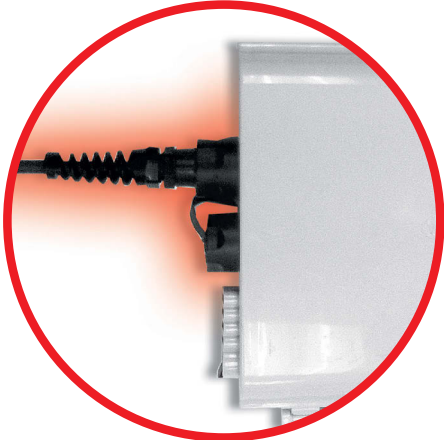


FEATURES

- Cost effective solution for in house termination
- IP68 Water immersion and Dust protection for harsh environment
- Wide range of operational temperature for outside plant -40oC/+70
- Wide range of cables to be used, 5-8mm OD cable with two 2.0mm to 3.0mm jacketed subunits
- Chemical Resistance
- Intermatable to other Industrial LC adaptor per IEC 61076-3-106
- Simple assembly requiring no special tools
- Durable mechanical mating, minimum of 500 matings



OPTICAL CHARACTERISTICS	SINGLEMODE	MULTIMODE
FOR IP-LC CONNECTOR	TYPICAL	TYPICAL
Insertion Loss	0.10dB	0.20dB
Return Loss	≥ 55dB typical for (PC)	
Durability	< 0.2dB typical change 500 matings	
Operating Temperature	-40°C to +70°C	
Ferrule Hole Size	125.5µm +1/-0 Concentricity: ≤ 1µm	127µm
IP Rating	IP 68	



CONNECTOR CODE	BOOT	
IP-LC	CSM	SM 125.5 µm
	CMM	MM 127 µm

IP - LC - CMM ORDER CODE example

SENKO ADVANCED COMPONENTS, INC.

Americas
 USA EAST 1-888-32-SENKO
 USA WEST 1-858-623-3300
 TEXAS 1-972-661-9080
 Sales-Americas@senko.com

Asia
 HONG KONG +852-2121-0516
 SHANGHAI +86-21-5830-4513
 SHENZHEN +86-755-2533-4893
 Sales-Asia@senko.com

Europe
 UK +44 (0) 118 982 1600
 ITALY +39 011 839 98 28
 POLAND +48 71 776 0737
 Sales-Europe@senko.com

Asia Pacific
 AUSTRALIA +61 (0) 3 9755-7922
 Sales-Asia-Pacific@senko.com
Middle East North Africa
 DUBAI +971 4 8865160
 Sales-MENA@senko.co

Japan
 TOKIO +81 (0) 3 5825-0911
 Sales-Japan@senko.com

CALL 1-888-32-SENKO