
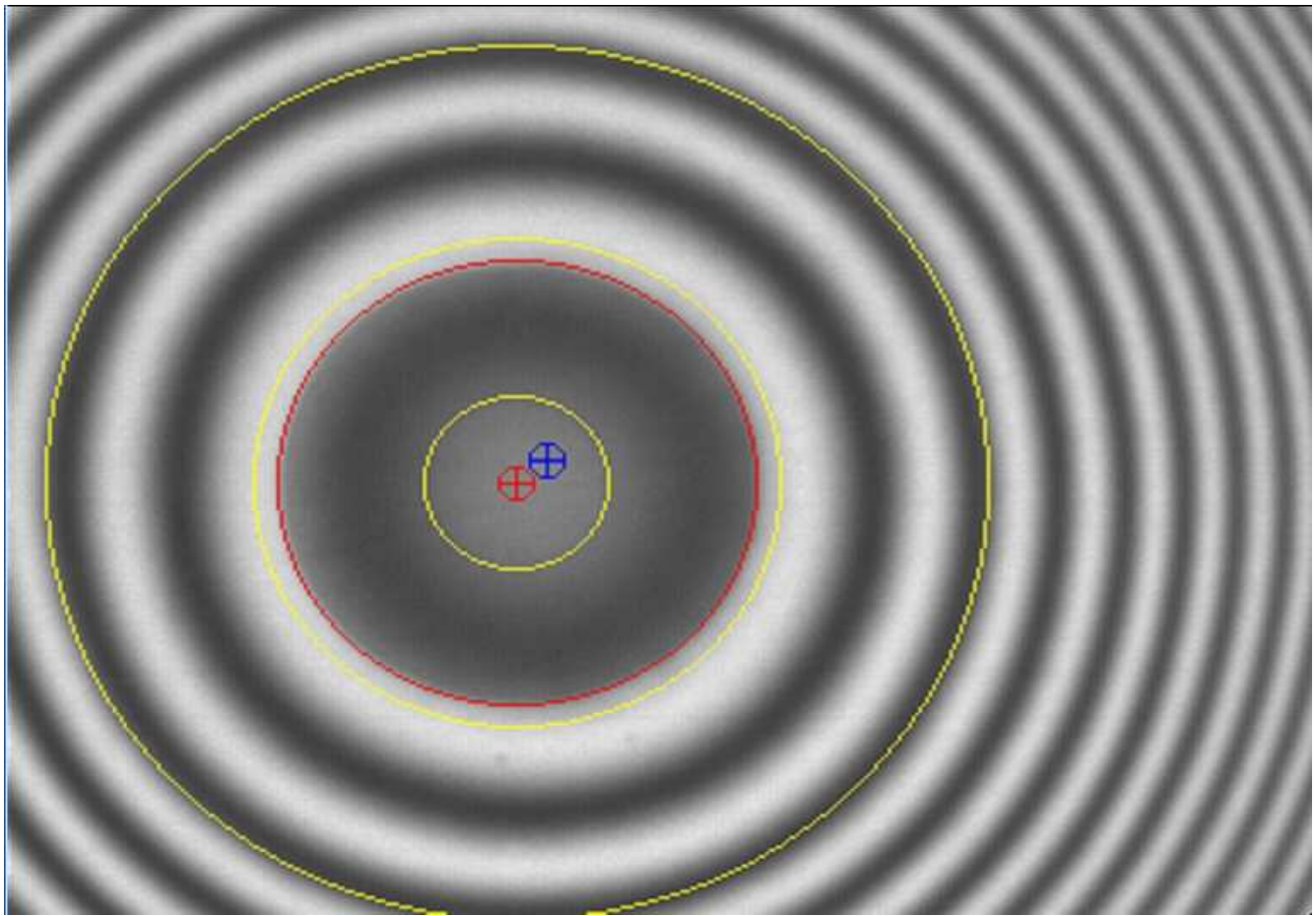


Ferrule Endface Geometry Measurement History

<b>Sample ID:</b> E2000APC 1	<b>PASS</b>
<b>Sample Type:</b> APC	
<b>Measurement Time &amp; Date:</b> 20121130_115524	
<b>Fitting Regions:</b> D=250um; E=140um; F=50um;	

Measurement Parameter	PASS/FAIL Settings		Measurement Result	Passed or Failed
	Minimum	Maximum		
Ferrule Radius of Curvature	5,00	15,00	9,97 mm	PASS
Fiber Radius of Curvature	n/a	n/a	9,99 mm	
Fiber Height (Spherical Fit)	-50,0	0,0	-10,7 nm	PASS
Fiber Height (Planar Fit)	n/a	n/a	207,6 nm	
Apex Offset	0,0	50,0	10,9 μm	PASS
Apex Bearing	n/a	n/a	56,3 deg.	
Angle Error	7,700	8,300	8,052 deg.	PASS
Key Error	-0,400	0,400	0,035 deg.	PASS
Fiber Roughness (Sq)	0	50	3 nm	PASS
Ferrule Roughness (Sq)	0	50	8 nm	PASS
Ferrule Bore Diameter	n/a	n/a	126,8 μm	
Comments				



<b>Sample ID:</b> E2000APC 1	
<b>PASS</b>	20121130_115524

	1310nm	1550nm
<b>IL</b>	n/a	n/a
<b>RL</b>	n/a	n/a